



PHARMACY REFRIGERATOR LPRF-A14

PHARMACY REFRIGERATOR LPRF-A14

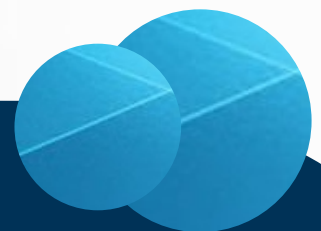
Pharmacy Refrigerator LPRF-A14 is a digital microprocessor controlled temperature refrigerator with holding capacity of 656 liters and adjustable design storage shelves. Features Inbuilt full automatic defrost system with CFC-Free refrigerant. It has standard electrical heater with double glass observation door and Noiseless, user friendly operation mode. Auto audio-visual signal alarm protection and it temperature ranges from 2 to 8°C with the LED display.

FEATURES

- ◆ Accurate temperature control to make inner temperature maintain 2 to 8 °C and increment at 0.1°C
- ◆ High-tech integrated sensors to display and control temperature
- ◆ Auto-defrost to remove moisture on cooling surface
- ◆ Removable outdoor double seal design for better temperature maintain and energy saving
- ◆ Microprocessor controlled forced-air cooling system
- ◆ Digital temperature displays with 0.1°C resolution
- ◆ Equipped with double layer door
- ◆ CFC-Free refrigerant and Shelves adjustable design
- ◆ Epoxy coated exterior anti-bacteria and easy cleaning
- ◆ Caster with break design for easy moving and lock
- ◆ Interior LED light for easy observation
- ◆ Electrical heater to decrease condensation on door in high humidity environment
- ◆ Equipped by Five alarm conditions High/Low Temperature; Power Failure; Sensor Error; Door Ajar, Low Voltage in Backup Battery.

APPLICATIONS

The pharmacy refrigerator is suitable for installation in drug stores, pharmacy companies, hospitals, epidemic prevention centre's to store medicines, testing kits, reagents, vaccines etc.



SPECIFICATION

Model	LPRF-A14
Cabinet Type	Upright
Gross Capacity	656 L
Climate Class	10 to 32°C
Cooling Type	Forced Air Cooling
Defrost Mode	Automatic
Refrigerant	CFC-Free
Door	Double Glass Door
Noise	42 dB
Temperature Range	2 to 8°C
Uniformity	± 3°C
Temperature Control	Microprocessor
Display	LED
Internal Dimension	1100 × 454 × 1325 mm
External Dimension	1220 × 642 × 1885 mm
Packing Dimension	1290 × 695 × 1940 mm
Power Voltage	220 to 240 / 50 to 60 V/Hz
Power Supply	443 W
Net/Gross Weight	158 /188 kg

STANDARD ACCESSORIES

Accessories No .	Name	Qty
1	Caster	4
2	Foot	Y
3	Shelf/Basket	10/-

